



Thoughtfully
Engineered
Chemistries

Chemical Products

Catalog & Line Card



- *Innovative Janitorial Formulas*
- *Mega-Concentrated Dish & Warewash*
- *Industrial Degreasers, Automotive & Facility*
- *Sanitizers & Disinfectants*
- *Custom Formulation & Private Label*

Scientifically Formulated



Anyone can put on a lab coat and pretend to know what they're doing, but to be truly proficient at chemistry and cleaning science you have to dedicate your life to it. That's what we've done - and what results is a truly intentional way of formulating chemical products. Everything that goes into our detergents and coatings is there for a reason and is always the most suitable component for the job. What we've learned from decades of being formulation chemists allows us to streamline our processes and leave out unnecessary ingredients. As a result, we deliver a more precisely designed product while remaining competitive in the marketplace. Our passion is breathing new life into a stubborn industry; and we're getting people excited about our intentionally designed and thoughtfully engineered chemical products. Thanks for being a part of our story.

Gregg R. Overman
Founder, Aleva Chemical

Product Categories



- 1 Innovative Janitorial**

- 4 Mega-Concentrated Dish & Warewash**

- 6 Industrial Degreasers, Facility Support**

- 8 Concrete & Asphalt Project Chemicals**

- 9 Ultra-Powerful Cleaners**

- 10 Advanced Aerosols**

- 13 Sanitizers & Disinfectants**

- 14 Automotive**

- 14 Laundry**

- 15 Coatings**

- 16 Custom Formulation & Private Label**

Thoughtfully Engineered.

Advanced Care & Cleaning for All Surfaces

Neutra Clean Surface-Safe Cleaner

Available as a waterless Super-Concentrate for blenders and packagers.

○ A thermodynamically engineered surfactant blend - thorough, surface-safe cleaning.



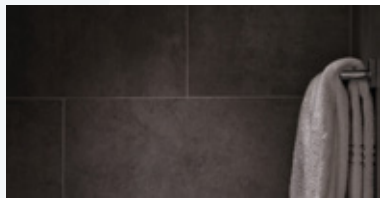
Our surfactant blend offers intense cleaning without being corrosive. Modern dispersant technology keeps soils from being redeposited. Lavender fragrance.

55 Gallon Drum JS-59-59-55
30 Gallon Drum JS-59-59-30
5 Gallon Pail JS-59-59-05
4X1 Gallon Case JS-59-59-04

pH 8	Neutral	Surface Types Porous & Nonporous	Foam Height High	Dilution Ratio 16 oz/gal
---------	----------------	--	----------------------------	------------------------------------

Neutra Quat Surface-Safe Disinfectant Cleaner

○ Positively charged components immediately disintegrate bacterial membranes.



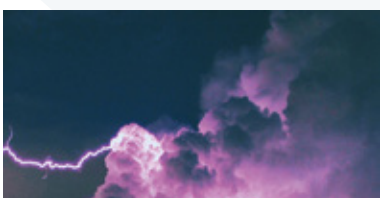
Our EPA registered disinfectant eliminates 99.9% of germs. Neutra Quat uses surfactants that quickly lyse bacteria and rinse away soils and grease.

55 Gallon Drum JS-74-60-55
30 Gallon Drum JS-74-60-30
5 Gallon Pail JS-74-60-05
4X1 Gallon Case JS-74-60-04

pH 8	Neutral	Surface Types See EPA Label	Foam Height Moderate	Dilution Ratio 256:1
---------	----------------	--------------------------------	--------------------------------	--------------------------------

Dust Magnet Dust Control Solution

○ Changes the electromagnetic properties of dust for a longer lasting clean.



Our proprietary, positively charged formulation causes dust to clump and fall, preventing its accumulation. Use only a few ounces at a time.

55 Gallon Drum JS-38-26-55
30 Gallon Drum JS-38-26-30
5 Gallon Pail JS-38-26-05
4X1 Gallon Case JS-38-26-04

pH 7	Neutral	Surface Type Floors	Coverage 30 ft²/ oz	Dilution Ratio RTU
---------	----------------	-------------------------------	--	------------------------------

Need a size not listed here? Need a scientifically designed formula? We can do that! Call 888-504-8178

Mop & Go Multi-Use Enzyme

Enzymes bioengineered for superior grease digestion & odor control.



Concentrated. Solves the problem of chronically greasy floors and provides odor control and drain maintenance. Distinctly refreshing fragrance. Ideal for foodservice.

55 Gallon Drum JS-25-06-55
30 Gallon Drum JS-25-06-30
5 Gallon Pail JS-25-06-05
4X1 Gallon Case JS-25-06-04

pH 6		Neutral	Surface Types Porous & Nonporous	Foam Height Moderate	Dilution Ratio 64:1
----------------	--	----------------	-------------------------------------	--------------------------------	-------------------------------

Orange Power Superior Emulsifying Degreaser

Available as a waterless Super-Concentrate for blenders and packagers.

The most advanced grease emulsifying surfactant blend.



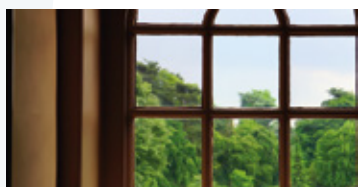
Formulated for foodservice and the food processing industries. Immediately emulsifies food grease and rinses remarkably clean.

55 Gallon Drum JS-55-24-55
30 Gallon Drum JS-55-24-30
5 Gallon Pail JS-55-24-05
4X1 Gallon Case JS-55-24-04

pH 12		Alkaline	Surface Types Porous & Nonporous	Foam Height High	Dilution Ratio 20:1
-----------------	--	-----------------	-------------------------------------	----------------------------	-------------------------------

Ultra ClearGlass 32x Concentrate Glass Cleaner

Conforms to the refractive index of glass - impossible to streak.



Formulated at the highest possible concentration. Scientifically designed to eliminate the usual streaks and smears caused by glass cleaners.

55 Gallon Drum JS-208-43-55
30 Gallon Drum JS-208-43-30
5 Gallon Pail JS-208-43-05
4X1 Gallon Case JS-208-43-04

pH 7		Neutral	Surface Types Nonporous	Foam Height Low	Dilution Ratio 32:1
----------------	--	----------------	----------------------------	---------------------------	-------------------------------

LSR Lime, Scale & Rust Remover

Targeted acid and surfactant composition for superior efficacy and speed.



Our acid-based lime scale remover is designed to quickly penetrate deposits and break them up - while thoroughly dissolving residue. Ideal for hard water build-up.

55 Gallon Drum ID-28-57-55
30 Gallon Drum ID-28-57-30
5 Gallon Pail ID-28-57-05
4X1 Gallon Case ID-28-57-04

pH 2		Acidic	Foam Height High	Targeted Deposits Calcium/Lime Scale Rust & Soap Scum	Use at 12 oz / gallon
----------------	--	---------------	----------------------------	---	---------------------------------

Auto Scrub Automatic Floor Scrubber Soap

○ A true amine soap for excellent detergency with low foaming.



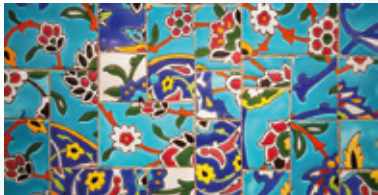
Designed to use far less soap per tank while cleaning floors with scientific precision. Engineered to produce no messy foam or residue.

55 Gallon Drum FL-33-11-55
30 Gallon Drum FL-33-11-30
5 Gallon Pail FL-33-11-05
4X1 Gallon Case FL-33-11-04

pH 12	Alkaline	Surface Type Floors	Foam Height Low	Dilution Ratio 128:1
--------------	-----------------	-------------------------------	---------------------------	--------------------------------

River City Floor Finish Various Solids Content

○ Tested using a **seven point analytical process** to ensure quality and composition.



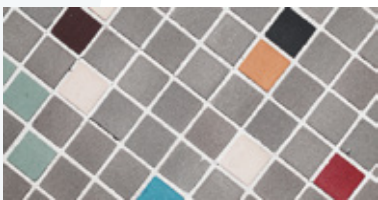
Precisely formulated to contain the solids specified and exhibit high durability and shine in the resulting finish. Available in 20, 22 and 24 percent solids content.

55 Gallon Drum FL-V-05-55
30 Gallon Drum FL-V-05-30
5 Gallon Pail FL-V-06-05
4X1 Gallon Case FL-V-06-04

pH 7	Neutral	Surface Types Nonporous Floors	Maintenance Medium to Low	Coverage 600 ft² / Gal
-------------	----------------	--	-------------------------------------	---

Wax Stripper 6x Concentrated

○ Uses **narrow range ethoxolates** for fast penetration of acrylic waxes.



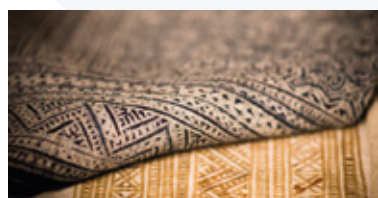
Highly concentrated. Penetration and digestion of finishes occurs more rapidly and using less product than anything else. Institutional spec. formula available.

55 Gallon Drum FL-42-07-55
30 Gallon Drum FL-42-07-30
5 Gallon Pail FL-42-07-05
4X1 Gallon Case FL-42-07-04

pH 12	Alkaline	Surface Types Acrylic Waxed Floors	Coverage 30 ft² / oz	Dilution Ratio 6:1
--------------	-----------------	--	---	------------------------------

Extractor Ultra Concentrated Carpet Extraction

○ The most **advanced dispersant technology** keeps soils from redepositing.



Designed to eliminate the need for multiple passes over the same spot. Absolutely no more difficult, "sticky" spots.

55 Gallon Drum FL-210-35-55
30 Gallon Drum FL-210-35-30
5 Gallon Pail FL-210-35-05
4X1 Gallon Case FL-210-35-04

pH 9	Slight Alkaline	Surface Types Carpet & Upholstery	Foam Height Low	Dilution Ratio 64:1
-------------	------------------------	---	---------------------------	-------------------------------

Need a size not listed here? Need a scientifically designed formula? We can do that! Call 888-504-8178

Power Kleen Machine Dish Detergent

Available as a waterless Super-Concentrate for blenders and packagers.

Surfactants designed for ultra alkaline solutions and the most effective cycles.



We know that the longer soap stays in contact with a given surface, the better the result. Our formula has far superior surface activity. Concentrated: 7 cc/rack.

55 Gallon Drum RD-60-72-55
30 Gallon Drum RD-60-72-30
5 Gallon Pail RD-60-72-05
4X1 Gallon Case RD-60-72-04

pH 14		Highly Alkaline	Machine Type High & Low Temp.	Liquid Detergent	Use at 7 cc / rack
--------------	--	------------------------	---	-------------------------	-------------------------------------

Flatware Presoak Fast-Penetrating Flatware Treatment

Advanced food and soil dispersants for better penetration.



Designed for the way kitchens work. Our presoak works more quickly than others, so flatware gets back in circulation fast, with little to no scrubbing.

55 Gallon Drum RD-81-08-55
30 Gallon Drum RD-81-08-30
5 Gallon Pail RD-81-08-05
4X1 Gallon Case RD-81-08-04

pH 11		Moderate Alkaline	Soak Time 20 Minutes	Flatware & Plateware Safe	Dilution Ratio 40:1
--------------	--	--------------------------	---------------------------------------	--------------------------------------	--------------------------------------

Power Dri Machine Rinse Agent

Available as a waterless Super-Concentrate for blenders and packagers.

Carefully engineered cloud point to eliminate spots and then quickly dry.



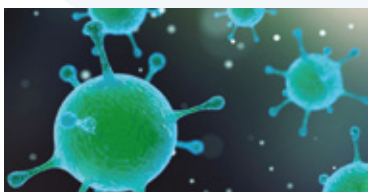
Power Dri's properties change during the cycle by first eliminating water spots and then shedding water from dishes quickly. Mega-concentrated: only 1 cc per rack.

55 Gallon Drum RD-52-71-55
30 Gallon Drum RD-52-71-30
5 Gallon Pail RD-52-71-05
4X1 Gallon Case RD-52-71-04

pH 4		Moderate Acidic	Machine Type High & Low Temp.	Water Spot Inhibiting	Use at 1 cc / rack
-------------	--	------------------------	---	------------------------------	-------------------------------------

QA Sanitizer EPA Registered Quaternary Sanitizer Concentrate

Tested using a seven point analytical process to ensure quality and composition



For third sink applications where quaternary performance is critical. Tested to ensure consistent composition and sanitizing performance.

55 Gallon Drum RD-72-74-55
30 Gallon Drum RD-72-74-30
5 Gallon Pail RD-72-74-05
4X1 Gallon Case RD-72-74-04

pH 6		Liquid	FOOD CONTACT AND PROCESSING EQUIPMENT SANITIZING Eliminates 99.999% of the following bacteria according to the AOAC Germicidal and Detergent Sanitizing Action of Disinfectants test: Aeromonas hydrophila, Listeria monocytogenes, Campylobacter jejuni, Shigella dysenteriae, Staphylococcus aureus, Streptococcus pyogenes, Escherichia coli, Salmonella typhi. See SDS for full listing.	Use at .25 oz / gallon
-------------	--	---------------	--	---

Super Blue Concentrated Manual Dish Detergent

○ A more concentrated **anionic & nonionic surfactant blend** for targeting food oils.



Our surfactant blending targets the specific oils and grease found in food to offer a truly thoughtful approach to warewash that is more effective, drop for drop.

55 Gallon Drum RD-73-91-55
30 Gallon Drum RD-73-91-30
5 Gallon Pail RD-73-91-05
4X1 Gallon Case RD-73-91-04

pH 9		Neutral	Foam Height High	Total Solids 18%	Use at 1 oz / gallon
----------------	--	----------------	----------------------------	----------------------------	--------------------------------

Ultra Premium Dish Premium Manual Pot & Pan Detergent

○ Richly formulated for **prolific sudsing and soil dispersion**.



For demanding warewashing applications and superior sudsing. Almost twice as much surfactant and active agents as standard manual dish soap.

55 Gallon Drum RD-29-96-55
30 Gallon Drum RD-29-96-30
5 Gallon Pail RD-29-96-05
4X1 Gallon Case RD-29-96-04

pH 9		Neutral	Foam Height High	Total Solids 30%	Use at 1 oz / gallon
----------------	--	----------------	----------------------------	----------------------------	--------------------------------

Chlor San Chlorine Sanitizer

○ Tested using a **seven point analytical process** to ensure quality and composition.



Our chlorine sanitizer is thoroughly analyzed for composition, eliminating guesswork and needless replacement due to expiration.

55 Gallon Drum RD-47-19-55
30 Gallon Drum RD-47-19-30
5 Gallon Pail RD-47-19-05
4X1 Gallon Case RD-47-19-04

pH 14		Highly Alkaline	Machine Type High & Low Temp.	Total Hypochlorite 12.5%	Use at 1 cc / rack
-----------------	--	------------------------	---	------------------------------------	------------------------------

No Brick Heavy Duty Grill Cleaner

Available as a waterless Super-Concentrate for blenders and packagers.

○ Dispersant molecules surround grease and carbon so it won't redeposit.



Our most popular product. No Brick targets grease and carbonized build-up on grills and ovens so you can wipe through in seconds. Also a superb boil-out.

55 Gallon Drum RD-1-52-55
30 Gallon Drum RD-1-52-30
5 Gallon Pail RD-1-52-05
4X1 Gallon Case RD-1-52-04

pH 14		Highly Alkaline	Foam Height High	Surface Types Ovens, Grills & Fryers	Dilution Ratio 4:1
-----------------	--	------------------------	----------------------------	--	------------------------------

Grease Buster Plus Machine Degreaser

○ Reduces the viscosity of thick machine oils to easily rinse them away.



Additives in Grease Buster Plus reduce the thickness of lubricants and grease - a power prescription for machine shops and mechanical degreasing.

55 Gallon Drum ID-09-45-55
30 Gallon Drum ID-09-45-30
5 Gallon Pail ID-09-45-05
4X1 Gallon Case ID-09-45-04

pH 11		Alkaline	Foam Height High	Job Types Mechanical	Use at 5 oz / gallon
--------------	--	-----------------	-------------------------	-----------------------------	-----------------------------

Prevail Multi-Purpose Power Soap

Available as a waterless Super-Concentrate for blenders and packagers.

○ Additives **ionically bond** to and rinse away soils and road film.



Prevail is the multi-tool of powerful cleaners. Originally made for tough earth moving equipment, Prevail gives superior results either with or without a pressure washer.

55 Gallon Drum ID-173-12-55
30 Gallon Drum ID-173-12-30
5 Gallon Pail ID-173-12-05
4X1 Gallon Case ID-173-12-04

pH 12		Alkaline	Foam Height High	Job Types Automotive & Mechanical	Use at 2 oz / gallon
--------------	--	-----------------	-------------------------	--	-----------------------------

Sud Z Wash Mega-Sudsing Automotive Detailer

○ Chemically buffered for superior cleaning of delicate surfaces.



We add powerful surfactants and cleaning components to our Sud Z Wash, then use buffering agents to protect delicate automotive finishes. Great for hand detailers.

55 Gallon Drum ID-121-90-55
30 Gallon Drum ID-121-90-30
5 Gallon Pail ID-121-90-05
4X1 Gallon Case ID-121-90-04

pH 10		Moderate Alkaline	Foam Height High	Safe for Delicate Finishes	Use at 5 oz / gallon
--------------	--	--------------------------	-------------------------	-----------------------------------	-----------------------------

Equipment Shield Removable Protective Coating

For use with Aleva's Equipment Shield Remover

○ Forms a **hydrophobic, protective barrier** against overspray and more.



Equipment Shield represents the newest generation of sacrificial coatings technology and forms a sun and rain-proof, impervious barrier to paint overspray.

55 Gallon Drum ID-211-79-55
30 Gallon Drum ID-211-79-30
5 Gallon Pail ID-211-79-05
4X1 Gallon Case ID-211-79-04

pH 9		For Use with Shield Remover	Duration 6 Months	Surface Types Machinery Equipment	Ready to Use Formula
-------------	--	------------------------------------	--------------------------	--	-----------------------------

Acid Wash One Aluminum Brightening Power Soap

- Acids designed with a **higher reactive affinity** for aluminum oxidation.



We make our Acid Wash to be best suited for removing oxidized aluminum - the cause of dull-looking aluminum surfaces. Cleans and super-brightens aluminum tanks.

55 Gallon Drum ID-03-04-55
30 Gallon Drum ID-03-04-30
5 Gallon Pail ID-03-04-05
4X1 Gallon Case ID-03-04-04

pH 2		Acidic	Foam Height High	Job Types Automotive & Mechanical	Use at 2 - / gallon
-------------	--	---------------	----------------------------	---	-------------------------------

Foam Chlor Chlorinated Degreaser

- Stabilized, **concentrated chlorine** with premium surfactants.



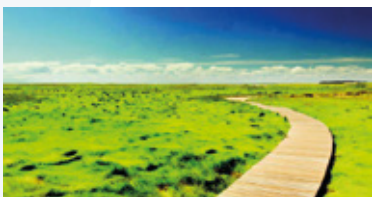
Designed for use in foodservice, processing and sanitation environments, our Foam Chlor produces a rich, chlorinated foam with incredible degreasing power.

55 Gallon Drum RD-1-52-55
30 Gallon Drum RD-1-52-30
5 Gallon Pail RD-1-52-05
4X1 Gallon Case RD-1-52-04

pH 14		Highly Alkaline	Foam Height High	Surface Types Non-porous Multi-Surface	Dilution Ratio 1:8
--------------	--	------------------------	----------------------------	--	------------------------------

Clean & Fresh Mega-Concentrated Deodorizer

- Ingredients **neutralize** odor-causing mercaptan, sulfide and amine molecules.



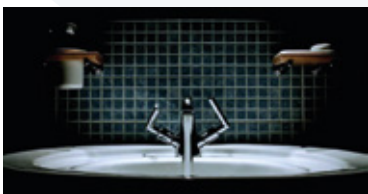
We designed our water-based deodorizer to hold considerably more fragrance in solution. Electromagnetic properties inhibit new odors and fight dust accumulation.

55 Gallon Drum ID-178-125-55
30 Gallon Drum ID-178-125-30
5 Gallon Pail ID-178-125-05
4X1 Gallon Case ID-178-125-04

pH 7		Neutral	Premium Fragrance	Water Based Non-Aerosol	Use at 12 oz / gallon
-------------	--	----------------	--------------------------	--------------------------------	---------------------------------

Hand Soaps Foaming & Lotion Style

- With **coconut derived ingredients** for a luxurious feel.



Formulated with the same degree of skin care as boutique personal care products. Powerful anti-bacterial components protect personnel and facilities.

55 Gallon Drum ID-HS-V-55
30 Gallon Drum ID-HS-V-30
5 Gallon Pail ID-HS-V-05
4X1 Gallon Case ID-HS-V-04

pH 7		Neutral	Anti-Bacterial	Premium Fragrance	Compatible with Most Dispensers
-------------	--	----------------	-----------------------	--------------------------	--

Crete-Off High Performance Concrete Remover

○ A specially designed surfactant blend to safely remove concrete.



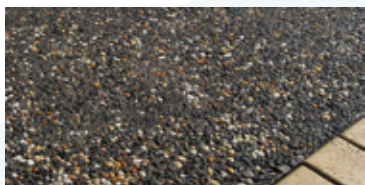
Formulated with buffering agents and gentle surfactants, Crete-Off protects valuable equipment while quickly and efficiently removing concrete deposits and build-up.

55 Gallon Drum ID-203-133-55
30 Gallon Drum ID-203-133-30
5 Gallon Pail ID-203-133-05
4X1 Gallon Case ID-203-133-04

pH 1		Highly Acidic	Foam Height High	Surface Type Concrete Equipment	Dilution Ratio 8:1
----------------	--	----------------------	----------------------------	---	------------------------------

Surface Retarder for Concrete Finishing

○ Double-strength formula for superior results, efficiency and value.



Made to slow the cure time of concrete, mortar or cement, exposing the underlying aggregate. Use half as much per square foot with our concentrated formula.

55 Gallon Drum ID-169-118-55
30 Gallon Drum ID-169-118-30
5 Gallon Pail ID-169-118-05
4X1 Gallon Case ID-169-118-04

pH 9		Slightly Alkaline	Foam Height Low	Surface Types Concrete, Mortar & Cement	Dilution Ratio Varies
----------------	--	--------------------------	---------------------------	---	---------------------------------

SledgeHammer Powerful Concrete Dissolver

○ Phosphoric and glycolic acids disintegrate concrete and cement.



Our Special blend of acids provides a superior, targeted solution to heavy concrete buildup. Highly concentrated for economy.

55 Gallon Drum ID-155-3-55
30 Gallon Drum ID-155-3-30
5 Gallon Pail ID-155-3-05
4X1 Gallon Case ID-155-3-04

pH 1		Highly Acidic	Surface Types Concrete & Masonry	Superior Wettability	Dilution Ratio 10:1
----------------	--	----------------------	--	-----------------------------	-------------------------------

Asphalt Release Protective Equipment & Tool Coating

○ Superior efficacy and surface protection, designed for daily use.



Our asphalt release agent isn't watered down and uses the most effective available components for superior resistance to the adhesion of asphalt and tar.

55 Gallon Drum ID-229-142-55
30 Gallon Drum ID-229-142-30
5 Gallon Pail ID-229-142-05
4X1 Gallon Case ID-229-142-04

pH 7		Safe for Finishes	Resists Adhesion Asphalt, Creosote & Tar	Ready to Use Formula
----------------	--	--------------------------	--	-----------------------------

Orange Oil Pure d'Limonene Cleaner

- 90% pure d'Limonene with added surfactants for rinsability.



For jobs requiring powerful solvency, our d'limonene solvent cleaner is the powerful choice. Made with true orange oil and premium bio-degradable surfactants.

55 Gallon Drum ID-57-66-55
30 Gallon Drum ID-57-66-30
5 Gallon Pail ID-57-66-05
4X1 Gallon Case ID-57-66-04

pH 8		Flammable Liquid	Foam Height Medium	Total d'Limonene 90%	Dilution Ratio RTU - 1:20
----------------	--	-------------------------	------------------------------	--------------------------------	-------------------------------------

Orange Oil Light d'Limonene Microemulsion Cleaner

- Advanced microemulsion technology harnesses powerful d'Limonene.



Orange Oil Light exhibits the superior solvency and powerful cleaning of d'Limonene at a fraction of the cost. Great for adhesive and asphalt/tar removal.

55 Gallon Drum JS-48-2-55
30 Gallon Drum JS-48-2-30
5 Gallon Pail JS-48-2-05
4X1 Gallon Case JS-48-2-04

pH 7		Flammable Liquid	Removes Adhesive Residue Asphalt & Tar	Surface Type Nonporous	Dilution Ratio RTU - 1:20
----------------	--	-------------------------	---	----------------------------------	-------------------------------------

CIP Cleaner Clean in Place Solution

- Multiple chemical systems to address specific process systems.



We have a series of CIP cleaners specially designed to meet the needs of closed processing system cleaning. Ask your salesperson for a consultation.

55 Gallon Drum ASK
30 Gallon Drum ASK
5 Gallon Pail ASK
4X1 Gallon Case ASK

pH 14		Highly Alkaline	Foam Height LOW	Job Types Multiple	Use at Varies
-----------------	--	------------------------	---------------------------	------------------------------	-------------------------

Terminator Ultra-Tough Degreaser

- Our highest alkaline concentration, for serious degreasing.



Made with the toughest jobs in mind, our highest-solids alkaline degreaser is for jobs where tough, solidified grease, fat and smoke has accumulated.

55 Gallon Drum ID-217-129-55
30 Gallon Drum ID-217-129-30
5 Gallon Pail ID-217-129-05
4X1 Gallon Case ID-217-129-04

pH 14		Highly Alkaline	Foam Height High	Job Types Vent Hoods and Fixtures, Build-Up	Use at 8 oz / gallon
-----------------	--	------------------------	----------------------------	---	--------------------------------

We combine expertise with powerful formulas - let us help you clean better and more efficiently. Call 888-504-8178

Phantom Lube w/PTFE Performance Lubricant

○ High adhesive strength for superior and lasting performance.



Our premium, high adhesive strength lubricant stays put to provide excellent lubrication on many surfaces. Withstands extreme pressure and initially goes on thin, to penetrate.

12 Can Case 495955

Withstands Extreme Pressure	Pressurized Aerosol	Temp. Range -30°F to +600°F	Job Types Mechanical	VOC Compliant in All States
-----------------------------	----------------------------	------------------------------------	-----------------------------	-----------------------------

SheriShine Oil-Based Stainless Steel Polish

○ Polishes and protects all metal surfaces and restores luster.



Specially formulated to protect stainless steel, chrome, brass and more, our polish removes fingerprints, water marks, grease and tarnish from bright metal.

12 Can Case 494785

Polishes & Protects	Pressurized Aerosol	Metal Types Stainless Steel, Chrome, Brass, Bronze, Copper, Metal Alloys, Aluminum	Repels Dust
---------------------	----------------------------	--	-------------

AlevaSafe Solvent Powerful Safety Solvent

○ The next generation of safety solvent for industrial use.



Our solvent degreaser effectively removes dirt, grease and grime using a powerful spray. Quickly flush away contaminants from motors, power tools, pumps, etc.

12 Can Case 499505

Non-Conductive	Pressurized Aerosol	Surface Type Metal	Non-Flammable Spray	No Residue
----------------	----------------------------	---------------------------	---------------------	------------

Citrisolv Organic Solvent & Cleaner

○ Formulated to clean, **improve electrical performance** and extend equipment life.



Our non-corrosive, non-conductive cleaner/solvent works to not only effectively clean equipment, but enhance performance and durability.

12 Can Case 499385

Non-Conductive	Pressurized Aerosol	Surface Type Metal	Improves Durability	Non-Chlorinated
----------------	----------------------------	---------------------------	---------------------	-----------------

Magiclean All Surface Cleaner

○ Heavy duty foaming with **surface enhancing additives**.



This all-purpose cleaner/degreaser clings to and penetrates washable surfaces - emulsifying oils and grease as it cleans to prevent redepositing.

12 Can Case 496115

Fresh, Clean Scent	Pressurized Aerosol	Foam Height High	Surface Types Nonporous	Grease Cutting Formula
--------------------	---------------------	-------------------------	--------------------------------	------------------------

Ultra Clearglass Non-Ammoniated Glass Cleaner

○ Completely **streakproof**, surface-safe cleaning for glass.



Our thick-foam formula lifts away the toughest soils while remaining safe for tinted windows and glass coatings. Provides streakproof cleaning and restoration.

12 Can Case 495205

Fresh, Clean Scent	Pressurized Aerosol	Foam Height High	Surface Types Glass	Streakproof Formula
--------------------	---------------------	-------------------------	----------------------------	---------------------

AlevaMist Metered, Automatic Air Fresheners

○ Contains **Ordenone®** for deodorizing and instantly freshening air.



With the active ingredient Ordenone®, these air-fresheners designed for use with metered dispensers last longer than competitors' brands and produce an effective dry spray.

12 Can Case:
Fresh Linen: 491333
Lemon Ice: 491193
Cucumber Melon: 491035

Long Lasting Dry Spray	Pressurized Aerosol	For Metered Dispensers	Non-Staining	No CFC's
------------------------	---------------------	-------------------------------	---------------------	-----------------

AlevAir Citrus Creme Broadcast Air Freshener

○ Contains **Ordenone®** for deodorizing and instantly freshening air.



Use anywhere odor is a problem. Odor neutralizing ingredients and a premium fragrance work together to eliminate even the toughest odors.

12 Can Case: 491105

Long Lasting Dry Spray	Pressurized Aerosol	Citrus Creme Fragrance	Non-Staining	No CFC's
------------------------	---------------------	-------------------------------	---------------------	-----------------


Dry Moly Lube High Performance Lubricant

- Molybdenum Disulfide inhibits friction and prevents seizure of machine parts.



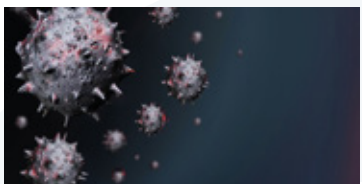
Dry moly lube bonds instantly to metal surfaces to form a strong barrier that lubricates and protects the surface from pressure and friction. Withstands temperatures up to 650° F.

12 Can Case 496950

Repels Dirt	 Pressurized Aerosol	Max Temp. 650° F	Surface Types Metal, Plastic Rubber	Penetrating Formula
----------------	--	---------------------	---	------------------------

Aerosol Disinfectant Powerful Disinfectant Spray

- Quaternary Ammonium compounds are EPA labeled to kill 99.8% of germs.



Our EPA registered spray disinfectant provides consistent sanitizing and peace of mind when used in homes or offices. A large, 15 oz can.

12 Can Case 495545

Fresh, Clean Scent	 Pressurized Aerosol	Dwell Time 10 Min.	Surface Types Nonporous	EPA # 67603-4-74424
-----------------------	---	------------------------------	-----------------------------------	------------------------

Carb Cleaner Carburetor & Throttle Body Cleaner

- Residue flushing & powerful cleaning to remove carbon deposits and more.



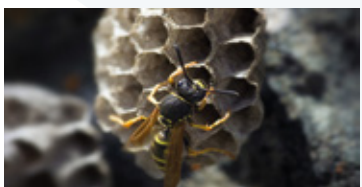
Our instant tune-up formula eliminates rough idling, flushes away carbonized buildup and cleans parts down to the metal. Use on sensors, intake manifolds, carburetors and more.

12 Can Case 494405

12 Oz. Can	 Pressurized Aerosol	Sensor Safe	Flushes Carb. Residue	No CFC's
---------------	--	------------------------	----------------------------------	---------------------


Wasp & Hornet Killer Long-Shot Spray

- Sprays up to 20 feet and kills on contact. 33,000 Volt dielectric strength.



Our powerful wasp & hornet killer is designed for use in non-food areas of homes and businesses. Instantly knocks down wasps, hornets and bees with a powerful, 20 foot stream.

12 Can Case: 495785

Kills in Seconds	 Pressurized Aerosol	Spray Distance 20 Feet	Dielectric Strength 33,000 Volts	Kills Wasps, Hornets & Bees
---------------------	--	----------------------------------	--	--

Sani Gel Ethanol Hand Sanitizer

Works on contact to **kill germs**. Skin conditioning with an ultra-clean fragrance.



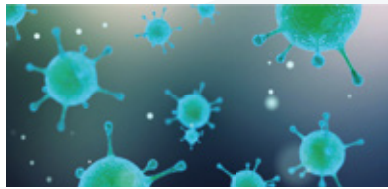
Made in our FDA facility, Sani Gel is second to none. We use high quality ethanol and superior ingredients to make this luxurious, highly effective product. Kills germs fast.

55 Gallon Drum PC-199-148-55
30 Gallon Drum PC-199-148-30
12 X 32 oz Case PC-199-148-032
4X1 Gallon Case PC-199-148-004

pH 6		Neutral	FDA Registered	Ethanol Content 70% & 80%	Skin Conditioning
----------------	--	----------------	-----------------------	--	--------------------------

#10 Quat Concentrated Disinfectant

Ultra-concentrated & EPA labeled to **kill COVID-19**.



Made to our exacting standards, #10 Quat is one of the most concentrated disinfectants available. With a concentrate, you'll always have plenty on hand and re-order less often.

55 Gallon Drum PC-199-001-55
30 Gallon Drum PC-199-001-30
12 X 32 oz Case PC-199-001-032
4X1 Gallon Case PC-199-001-004

pH 6		Neutral	EPA listed to kill COVID-19	Use at .25 oz / gallon
----------------	--	----------------	------------------------------------	-----------------------------------

Sani Foam Ethanol-Free, Foaming Hand Sanitizer

Powerful disinfectants are tough on germs, but gentle on hands.



With safe active ingredients suited to institutional settings, Sani Foam can provide ethanol-free peace of mind and reliable hygiene for everyone. For foam dispensers.

55 Gallon Drum PC-137-79-55
30 Gallon Drum PC-137-79-30
5 Gallon Pail PC-137-79-05
4X1 Gallon Case PC-137-79-04

pH 7		Neutral	Kills Germs Fast	Ethanol Free	Skin Conditioning
----------------	--	----------------	-------------------------	---------------------	--------------------------

ClearBlue Antibacterial Hand Soap

Contains PCMX for reliable disinfecting.



Great for hospitals and institutions, our ClearBlue antibacterial hand soap is the best choice in reliable, consistent hygiene for staff and visitors.

55 Gallon Drum PC-123-79-55
30 Gallon Drum PC-123-79-30
5 Gallon Pail PC-123-79-05
4X1 Gallon Case PC-123-79-04

pH 7		Neutral	Skin Conditioning	Kills 99.9% of Germs	Made for Gel Dispensers
----------------	--	----------------	--------------------------	-----------------------------	--------------------------------

Blue Magic Silicone Based Tire Shine

- A proprietary silicone blend for high shine and easy application.



Blue Magic represents the leading edge in tire and trim “wet look” dressing. Our blend reduces slinging of excess product and offers an enhanced, lasting shine.

55 Gallon Drum ID-013-79-55
30 Gallon Drum ID-013-79-30
5 Gallon Pail ID-013-79-05
4X1 Gallon Case ID-013-79-04

Solvent Based	 Flammable Liquid	Long Lasting Shine	Surfaces Tires and Select Trim	Ready to Use
----------------------	---	--------------------	-----------------------------------	--------------

Dress All Water Based Tire & Vinyl Dressing

- Superior Shine & Protection with water based convenience.



Our cream-style tire and vinyl dressing restores grayed, weathered vinyl and trim. Use liberally on dashboards, panels and even tires. Water based and non-flammable.

55 Gallon Drum ID-097-79-55
30 Gallon Drum ID-097-79-30
5 Gallon Pail ID-097-79-05
4X1 Gallon Case ID-097-79-04

pH 7 	Neutral	Shines & Protects	Surface Types Plastic, Vinyl & Rubber	Ready to Use
---	----------------	------------------------------	--	--------------

Wheel Bright Acid Based Chrome and Aluminum Brightener

- With targeted acids for eliminating oxidization.



With rapid wetting of oily surfaces and no scrubbing needed, Wheel Bright brightens even the dingiest chrome or aluminum.

55 Gallon Drum ID-100-79-55
30 Gallon Drum ID-100-79-30
5 Gallon Pail ID-100-79-05
4X1 Gallon Case ID-100-79-04

pH 1 	 Acidic	Foam Height Low	Surface Types Chrome, Aluminum Select Alloys	Use at 5 oz / gallon
--	---	---------------------------	--	-------------------------


Stain Away Super Concentrated Stain Remover

- Powerful reducing agents decompose organic stains.



Use on organic stains prior to washing - no brushing or other treatments required. Removes most stains after the first application. Color safe.

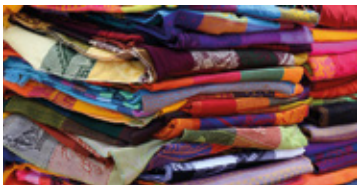
55 Gallon Drum ID-085-79-55
30 Gallon Drum ID-085-79-30
5 Gallon Pail ID-085-79-05
4X1 Gallon Case ID-085-79-04

pH 9 	Slight Alkaline	Stain Types Organic	Surface Types Fabric & Upholstery	Ready to Use
--	------------------------	-------------------------------	--------------------------------------	--------------

Laundry Lightning General Purpose Laundry Detergent

Ask about our laundry builders, sours and other industrial grade options.

- Optical brighteners and enhanced surfactants clean and brighten clothes.



Our mega-concentrated detergent is even more powerful and concentrated than other so-called ultra-concentrate products. Resulting whites are whiter and colors brighter.

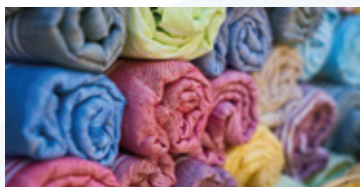
55 Gallon Drum ID-050-79-55
30 Gallon Drum ID-050-79-30
5 Gallon Pail ID-050-79-05
4X1 Gallon Case ID-050-79-04

pH 10		Slight Alkaline	Solids Content >30%	Materials Clothing & Fabrics	Use at 4 oz / load
-----------------	--	------------------------	----------------------------------	---------------------------------	------------------------------

Fabric Softener Liquid Fabric Softener

Ask about our laundry builders, sours and other industrial grade options.

- Modifies electrostatic properties of fabrics to eliminate wrinkles and soften clothes.



Aleva's Fabric Softener uses advanced softening agents to keep clothes soft and wrinkle free - eliminating static, lint and hair in finished laundry.

55 Gallon Drum ID-036-79-55
30 Gallon Drum ID-036-79-30
5 Gallon Pail ID-036-79-05
4X1 Gallon Case ID-036-79-04

pH 6		Neutral	Available as A Softener/Sour	Materials Clothing & Fabrics	Use at 2 oz / load
----------------	--	----------------	---------------------------------	---------------------------------	------------------------------

Concrete Sealer Water Based and Long Lasting

- The next generation of concrete protecting coatings.



Our long lasting, high adhesion formula is the most effective and economical method for protecting surfaces. Lasts for years on most surfaces.

55 Gallon Drum ID-156-79-55
30 Gallon Drum ID-156-79-30
5 Gallon Pail ID-156-79-05
4X1 Gallon Case ID-156-79-04

Water Repelling	Water Based	Ready to Use	Surfaces Concrete & Masonry	Coverage 120 ft²/ Gal
------------------------	--------------------	---------------------	--------------------------------	--

Waterproofing Stain Ultra-Hydrophobic Wood Stain

- Advanced hydrophobic properties repel water longer.



Offered in a variety of colors, our semi-transparent waterproofing wood stain lasts longer and protects wood better than the leading national brands.

55 Gallon Drum ID-063-79-55
30 Gallon Drum ID-063-79-30
5 Gallon Pail ID-063-79-05
4X1 Gallon Case ID-063-79-04

Water Repelling	Water Based	Ready to Use	Surfaces Wood	Coverage 120 ft²/ Gal
------------------------	--------------------	---------------------	-------------------------	--

Intentionally Formulated.

Formulation & Private Label

Custom Formulation and Private Label

Our customers tell us that flexibility is one of our greatest qualities - and we believe that's most apparent in the way we accommodate our clients. Plus, we're great at finding new chemical solutions to your everyday problems. Do you have a specific problem that we can help solve? At Aleva, we don't believe custom formulation should be prohibitively expensive or troublesome - and you may be surprised at how easy it is to find a solution that will work for you. In fact, we'll even print your logo on the label for no charge on surprisingly modest quantity orders. Here's how it works:

- 1** Call our toll-free number and speak with a chemist for a no-charge consultation.
- 2** We'll recommend either a custom formulated product or something from our extensive formula library.
- 3** You choose the volume and package type and any custom logo or labeling and you're done. Most orders ship in as little as 72 hours.

Speak with A Chemist

888-504-8178

info@alevachem.com



Aleva Chemical
1792 Latham Street
Memphis, TN 38106
888-504-8178
AlevaChem.com

Serving the U.S. and the world since 2006, Aleva Chemical (formerly The River City Soap Company) has brought a new way of doing business to the tired old chemical industry. For distributors and even end-users tired of buying diluted, overpriced products, Aleva offers a direct-from-manufacturer solution with personalized service and free or low-cost delivery (domestic freight to outside of the Memphis area co-opted or paid outright on qualifying orders). We understand clean - and at Aleva, our approach is more scientific and precise. Thanks to over 35 years of experience in chemical formulation, we've found that we could use our scientific understanding of chemistry and cleaning to produce products that don't just clean - but clean better and more thoroughly by applying their unique chemical properties. We produce hard surface cleaners, industrial degreasers, personal care products and dazzling janitorial solutions with pharmaceutical precision. Take the fear and guesswork out any job - and find out that you can pay less and work more efficiently with a well-engineered product.